

Conserve Wildlife Foundation of NJ

Northern Diamondback Terrapin (Malaclemys terrapin terrapin) Data Collection Form

Date (Month/Day/Year) : \_\_\_\_\_ Recorder(s): \_\_\_\_\_

Capture Location: \_\_\_\_\_ Capture Method: \_\_\_\_\_ Time (mil): \_\_\_\_\_

Weather Condition: Sunny / Pt. Cloudy / Mostly Cloudy / Overcast / Rain Air Temp: \_\_\_\_\_ F

Tidal Stage (circle): Low Slack Incoming High Slack Outgoing If applicable: Spring Neap

GPS Point ID: \_\_\_\_\_

Captured by (names): \_\_\_\_\_

Morphometrics:

S. carapace length \_\_\_\_\_ mm Carapace width \_\_\_\_\_ mm

Plastron length \_\_\_\_\_ mm Carapace height \_\_\_\_\_ mm Weight \_\_\_\_\_ g

General Conditions and Observations:

Sex: Male Female Juvenile Age (if applicable) : \_\_\_\_\_

Previously Captured: Y or N If so, Notch Designation \_\_\_\_\_ PIT Tag # \_\_\_\_\_

Newly Captured: Notch Designation: \_\_\_\_\_ PIT Tag# \_\_\_\_\_

Carapace Comments \_\_\_\_\_

Plastron Comments: \_\_\_\_\_

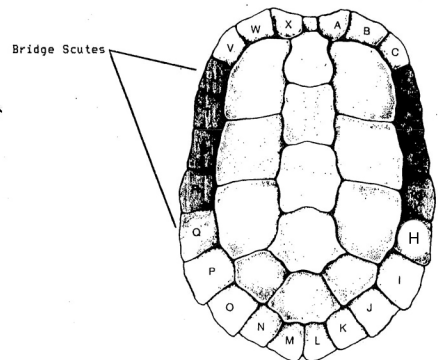
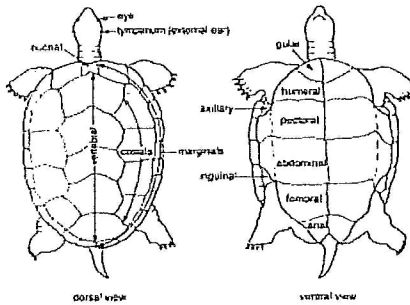
Body Condition (limbs, tail, head): \_\_\_\_\_

Number Marginal Scutes \_\_\_\_\_ (w/o nuchal)

Number Costal Scutes \_\_\_\_\_

Number Vertebral Scutes \_\_\_\_\_

Split Nuchal Y or N



Capture/Release Information:

Captured alive: Y or N Released alive: Y or N Release Time: \_\_\_\_\_

Released same date? Y or N If not, date released: \_\_\_\_\_

Was female gravid? Y or N Clutch Size \_\_\_\_\_

Notes: \_\_\_\_\_